

FP-CL product information sheet

Product Specifications

Fits most: 23" - 42" flat panels

Supports up to: 80 lbs (36.3 kg)

Tilt: -20° to +25°

Mounting profile: 3.5" (89mm)

Maximum extension: 23.1" (587mm)

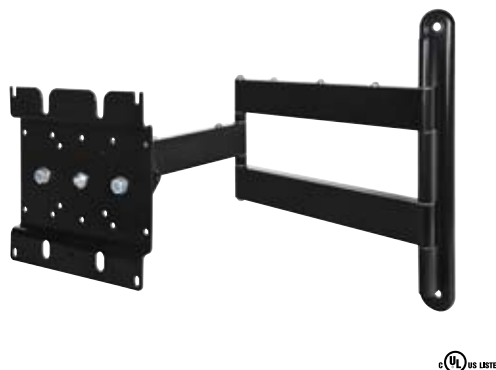
VESA compliant: 75x75 to 200x200

Mounting: Single-stud

UL listed: Yes

Warranty: 5 years

Color: Black and Platinum



Product Benefits

- Tilt, pan and swivel for maximum viewing flexibility
- Arms nest for low 3.5" (89mm) mounting profile
- Built-in screen leveling
- Lift n' Lock™ allows you to easily attach your flat panel to the mount
- Locking system secures panel to mount
- Simple to install and use
- Includes complete hardware kit



The FP-CL comes fully assembled right out of the box for fast installation

Series



75/100 FD



QM100 T*



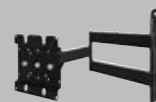
U2 Fixed**



U3 Tilt***



75/100 CL



FP-CL



UCL

* also available in small and medium fixed

** also available in large/extra large

*** also available in small and medium

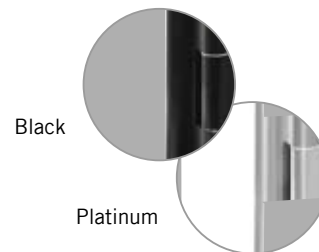
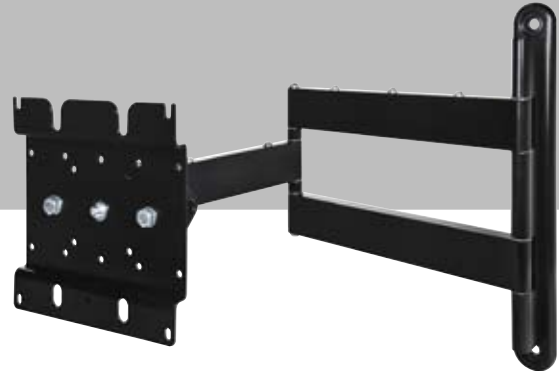
OmniMount, an innovator of A/V mounts and furniture for more than a quarter century, is the choice of professional installers and the brand most recommended by flat panel manufacturers. The Classic Series is a full line of fixed, tilt, flip down and cantilever mounting solutions designed with simplicity and reliability in mind. The FP-CL is a medium cantilever mount that is the obvious choice for basic installations.



FP-CL technical data sheet



OmniMount, an innovator of A/V mounts and furniture for more than a quarter century, is the choice of professional installers and the brand most recommended by flat panel manufacturers. The Classic Series is a full line of fixed, tilt, flip down and cantilever mounting solutions designed with simplicity and reliability in mind. The FP-CL is a medium cantilever mount that is the obvious choice for basic installations.



Product Specifications

Fits most: 23" - 42" flat panels

Supports up to: 80 lbs (36.3 kg)

Tilt: -20° to +25°

Mounting profile: 3.5" (89mm)

Maximum extension: 23.1" (587mm)

VESA compliant: 75x75 to 200x200

Mounting: Single-stud

UL listed: Yes

Warranty: 5 years

Color: Black and Platinum

Product Benefits

- Tilt, pan and swivel for maximum viewing flexibility
- Arms nest for low 3.5" (89mm) mounting profile
- Built-in screen leveling
- Lift n' Lock™ allows you to easily attach your flat panel to the mount
- Locking system secures panel to mount
- Simple to install and use
- Includes complete hardware kit

	Color	Stock Code	Packaging UPC	MC UPC
Americas	Black	1003696-1	728901018343	NA
International	Black	1003522-1	728901019890	NA
Americas	Silver	1002687-1	728901012372	NA
International	Silver	1002687EU-1	728901016660	NA

	Dimensions WxDxH inches (mm)	Wt lbs (kg)
Product Box	13.9 x 15.4 x 3.6 (353x391x92)	15 (6.8)
Master Carton	NA	NA

Box Contents	Qty
Cantilever mount	1
Complete mount installation hardware kit	1
Complete panel attachment hardware kit	1
Instruction manual	1
Flat panel compatibility chart	1

