

## Pratik®

### • COLUMN STANDS

#### • 4 models

- Manual swivel : Ref 2526-Ref 2579
- Manual swivel and Light Motion® : Ref 2527
- Motorized Swivel TWIST® : Ref 2528
- Motorized Swivel TWIST® and Light Motion® : Ref 2529



Manual Swivel

Ref. 2526

318528 002526 8

Manual Swivel  
Light Motion®

Ref 2527

318528 002527 5

Manual Swivel

Ref 2579

318528 002579 4

Motorized Swivel  
Light Motion®

Ref 2529

318528 002529 9

Motorized Swivel

Ref 2528

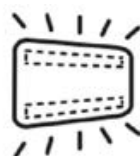
318528 002528 2



Ref. 2526  
Ref. 2527  
Ref. 2579  
+/- 20°



Ref. 2528  
Ref. 2529  
+/- 25°



Ref. 2527  
Ref. 2529



Up to  
800x540 mm



30° - 50°

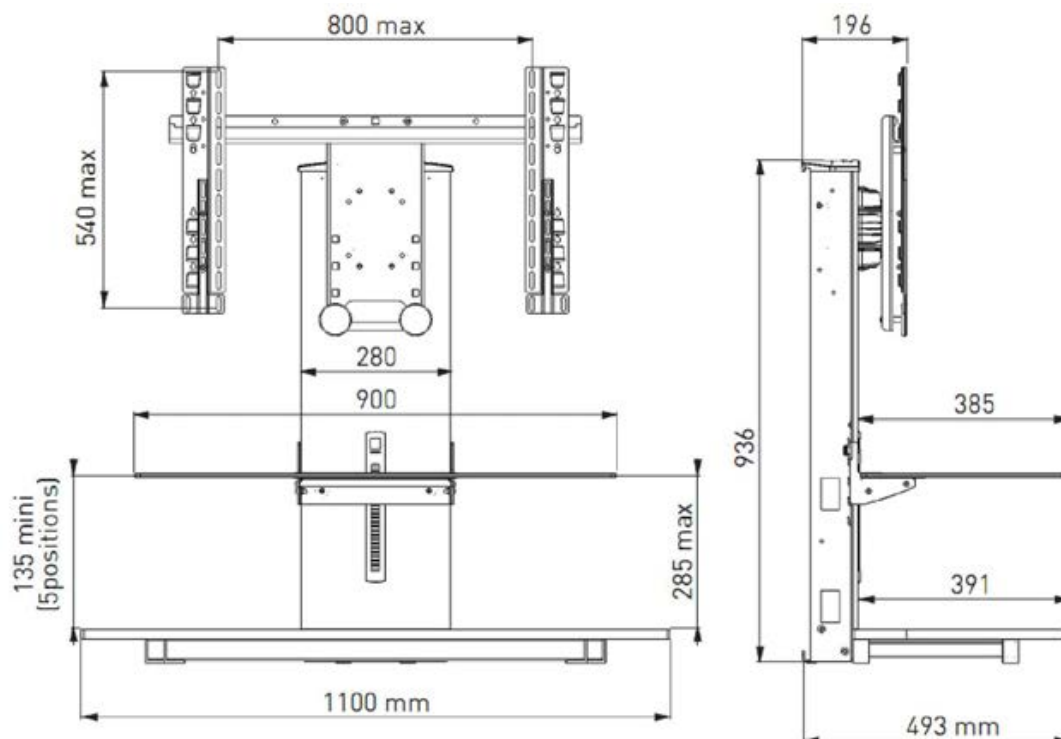


Ref. 2526  
Ref. 2527  
Ref. 2579  
60 KG

Ref. 2528  
Ref. 2529  
50 KG

Guaranteed 10 years. Motorization components and Light Motion® components are guaranteed 2 years.

- Manual (Ref. 2526 - Ref.2527 –Ref.2579) or motorized TWIST® (Ref. 2528 – Ref.2529) swiveling of the screen to watch television from wherever you are in the room.
- LIGHT MOTION® ambient lighting (Ref.2527 – Ref.2529)
- Secure attachment
- Fits into the corner of your room
- Cable management system
- Room for 3 components



- Manual vertical adjustment : +/-2°
- 3 positions to adjust the screen height
- Programmable adjustment of the left and right swiveling end-pieces and programming of a preferred position with key recall (Ref. 2528 – Ref. 2529)
- PILOT MOTION® infrared remote control (Ref.2528 – Ref.2529)
- LIGHT MOTION® system : ambient lighting system operated by remote control, 2 LED strips (Ref.2527 – Ref.2529). Automatic color variation function. Adjustment of the colors, intensities and variation speeds. Variation of the colors depending on the sound intensity. Memorization of 4 lighting preferences.
- Component holding shelf in black gloss glass : 6 mm thick, height-adjustable without tools, with anti removal system
- 2 elastomer rear pads and 4 sliding pads
- Horizontal center-to-center distance : min=5cm, max=81cm
- Vertical center-to-center distance : min=5cm, max=54.5cm
- Vertical reversible black and wenge wood rear panel
- Rear ambient panel in medium, white silk finish: 9mm thick (Ref.2527-Ref.2529)
- Steel column painted in black powder-coated epoxy paint
- Base in medium black : 18mm thick
- Max upper shelf weight : 15kg
- Max lower shelf weight : 40kg